

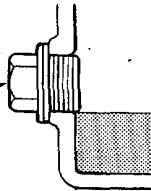
# Maintenance

## Transmission oil

### Oil Level Inspection

1. Check with oil at operating temperature, engine OFF, and car on level ground.
2. Remove oil filler plug and check level with finger.
3. Oil level must be up to fill hole. If it is below hole, add oil until it runs out, then reinstall plug.

**OIL FILLER PLUG**  
45 N·m (4.5 kg-m, 33 lb-ft)



### Oil Change

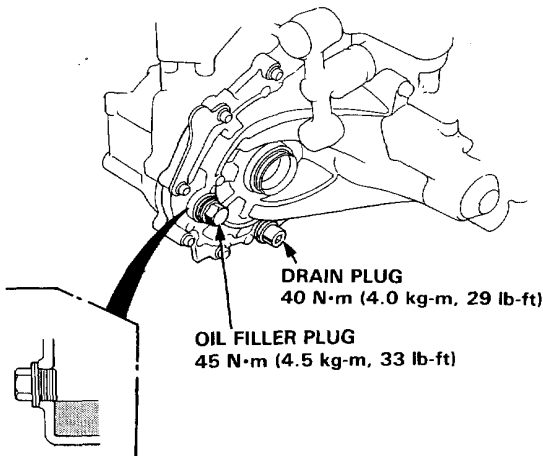
Use only SAE 10W-30 or 10W-40 oil rated SF grade

1. With transmission oil at operating temperature, engine OFF, and car on level ground, remove drain plug and drain transmission.
2. Reinstall drain plug with new washer, and refill to proper level.

NOTE: Drain plug washer should be replaced at every oil change.

### Oil Capacity

- 1.9 ℓ (2.0 U.S. qt.) after drain.  
2.0 ℓ (2.1 U.S. qt.) after overhaul.

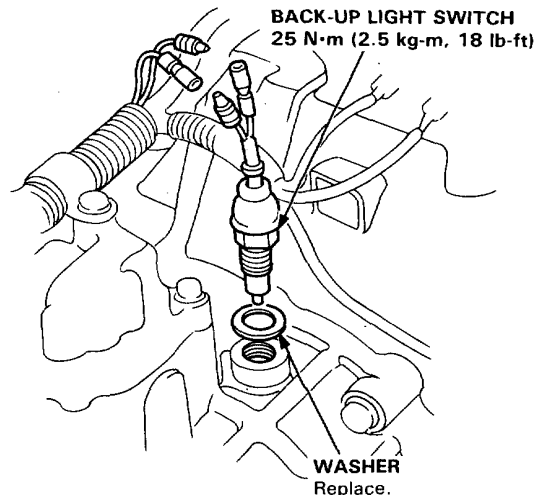


# Back-up Light Switch

## Replacement

NOTE: Check the switch see Section 16.

1. Disconnect the back-up light switch wire connectors.
2. Remove the back-up light switch.



3. Install the new washer and back-up light switch.